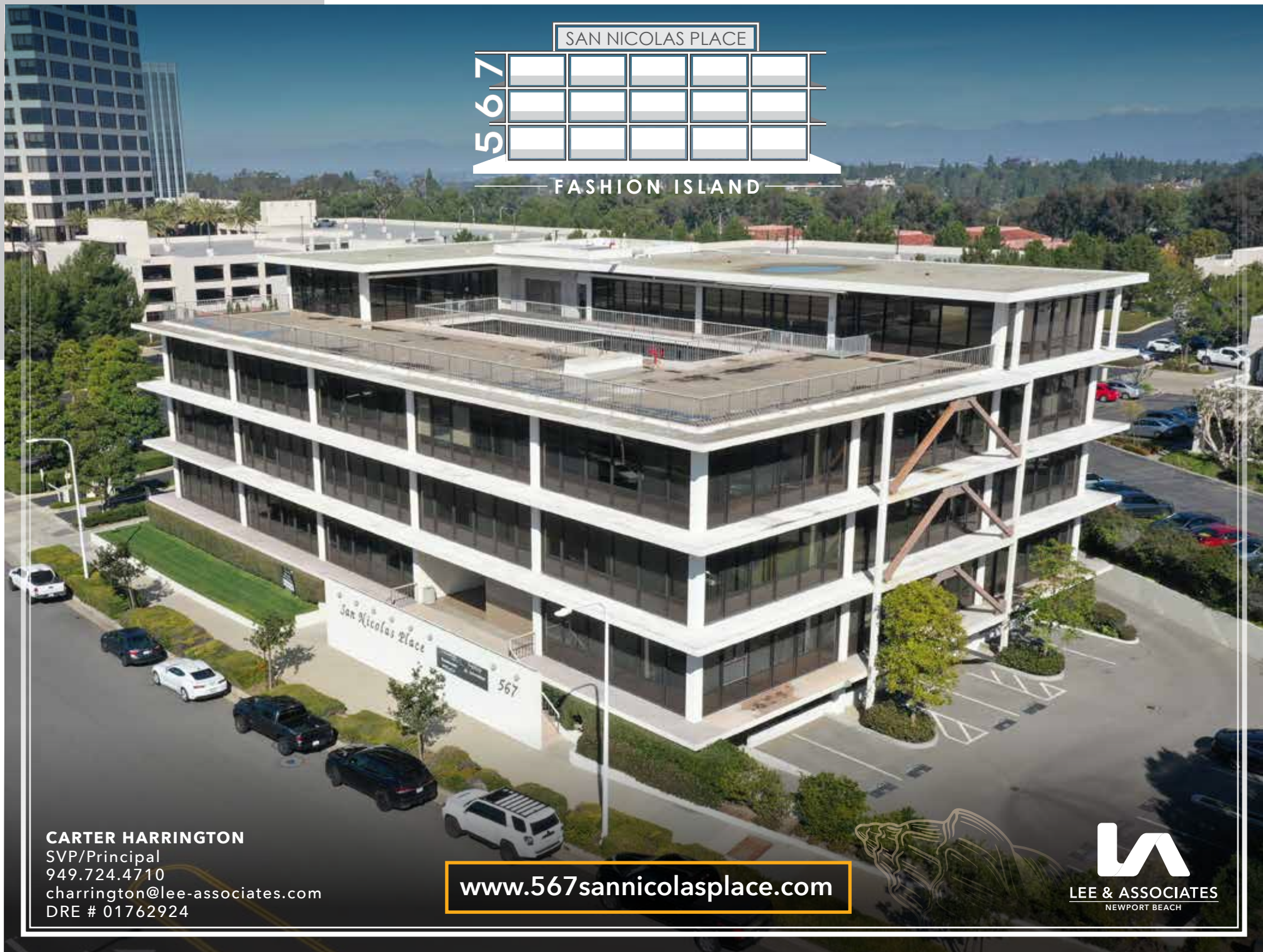


SAN NICOLAS PLACE

567

FASHION ISLAND



CARTER HARRINGTON
SVP/Principal
949.724.4710
charrington@lee-associates.com
DRE # 01762924

www.567sannicolasplace.com



LEE & ASSOCIATES
NEWPORT BEACH



CARTER HARRINGTON
 SVP/Principal
 949.724.4710
 charrington@lee-associates.com
 DRE # 01762924



San Nicolas Place is strategically located in the heart of Newport Center. Surface and subterranean parking are available. Open air environment in a beautiful courtyard setting. Walking distance to numerous worldclass retail amenities.

Occupancy for lease targeting November 1, 2024. New building ownership with an expiring ground lease. Renovations will enhance the location with modern finishes and enhancements. Signage opportunities are available as well as reserved covered parking.



PROPERTY FEATURES

- Expansive Ocean and Mountain views
- Prime Newport Center Location with Worldclass amenities
- Reserved Covered parking available
- Two Elevators
- 40,000 SF Freestanding Office Building
- Exterior entrance front doors
- Secure lobby entrance
- Orange County's most coveted and prestigious business location
- Occupancy target November 1, 2024
- Building signage opportunities available

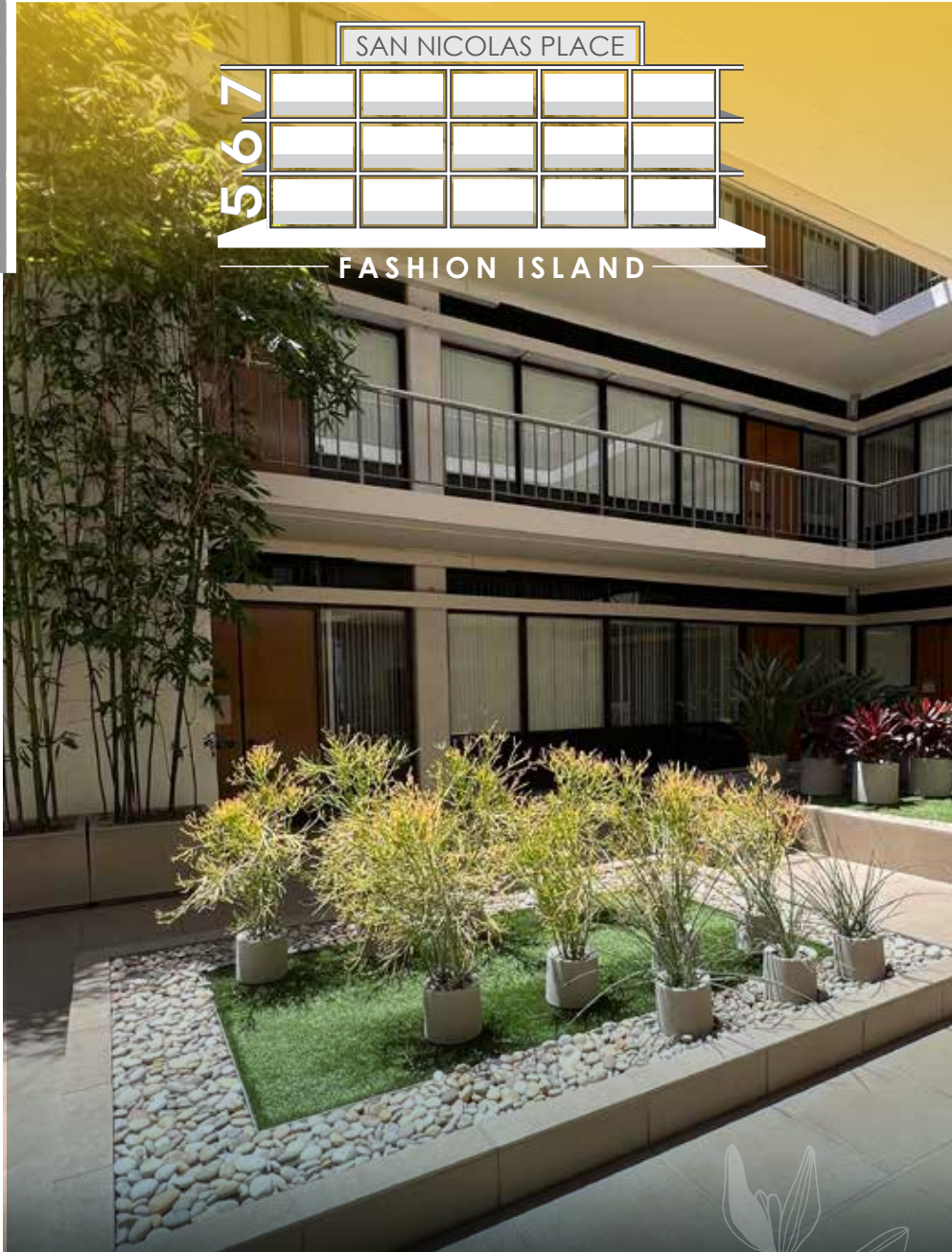
www.567sannicolasplace.com



SAN NICOLAS PLACE

567

FASHION ISLAND



CARTER HARRINGTON
SVP/Principal
949.724.4710
charrington@lee-associates.com
DRE # 01762924



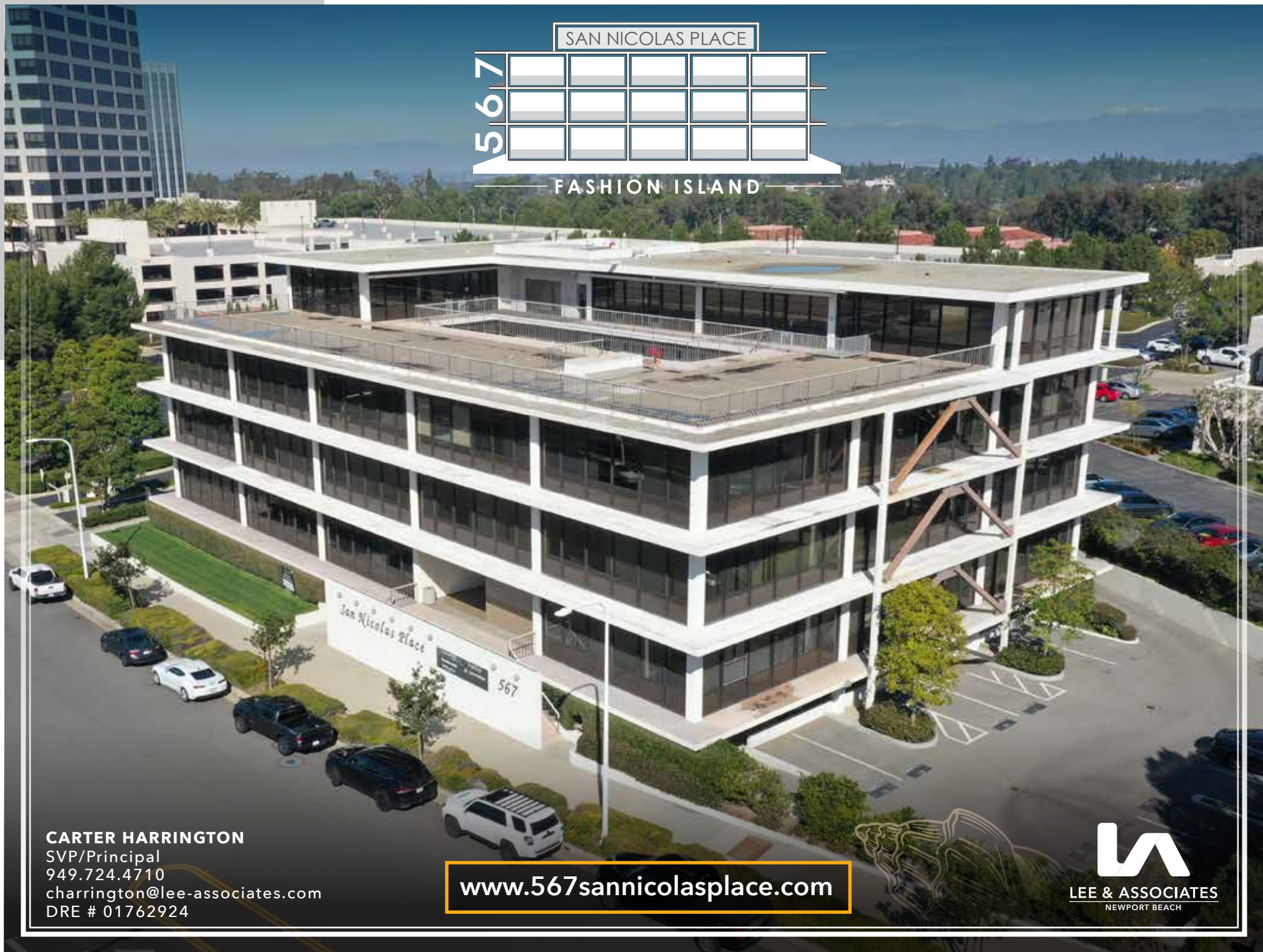
www.567sannicolasplace.com



SAN NICOLAS PLACE

567

FASHION ISLAND



CARTER HARRINGTON
SVP/Principal
949.724.4710
charrington@lee-associates.com
DRE # 01762924

www.567sannicolasplace.com



LEE & ASSOCIATES
NEWPORT BEACH

SAN NICOLAS PLACE

567



FASHION ISLAND



CARTER HARRINGTON
SVP/Principal
949.724.4710
charrington@lee-associates.com
DRE # 01762924

**AVAILABLE
SUITES**

AVAILABILITIES

RSF	SUITE	RATE	AVAILABLE
±1,478	100	\$3.95 FSG	November 2024
±1,518	130	\$3.95 FSG	November 2024
±2,428	220	\$4.25 FSG	November 2024
±1,286	240	\$4.25 FSG	November 2024
±926	280	\$3.95 FSG	November 2024
±1,466	300	\$3.95 FSG	November 2024
±2,159	340	\$3.95 FSG	November 2024

www.567sannicolasplace.com

SAN NICOLAS PLACE

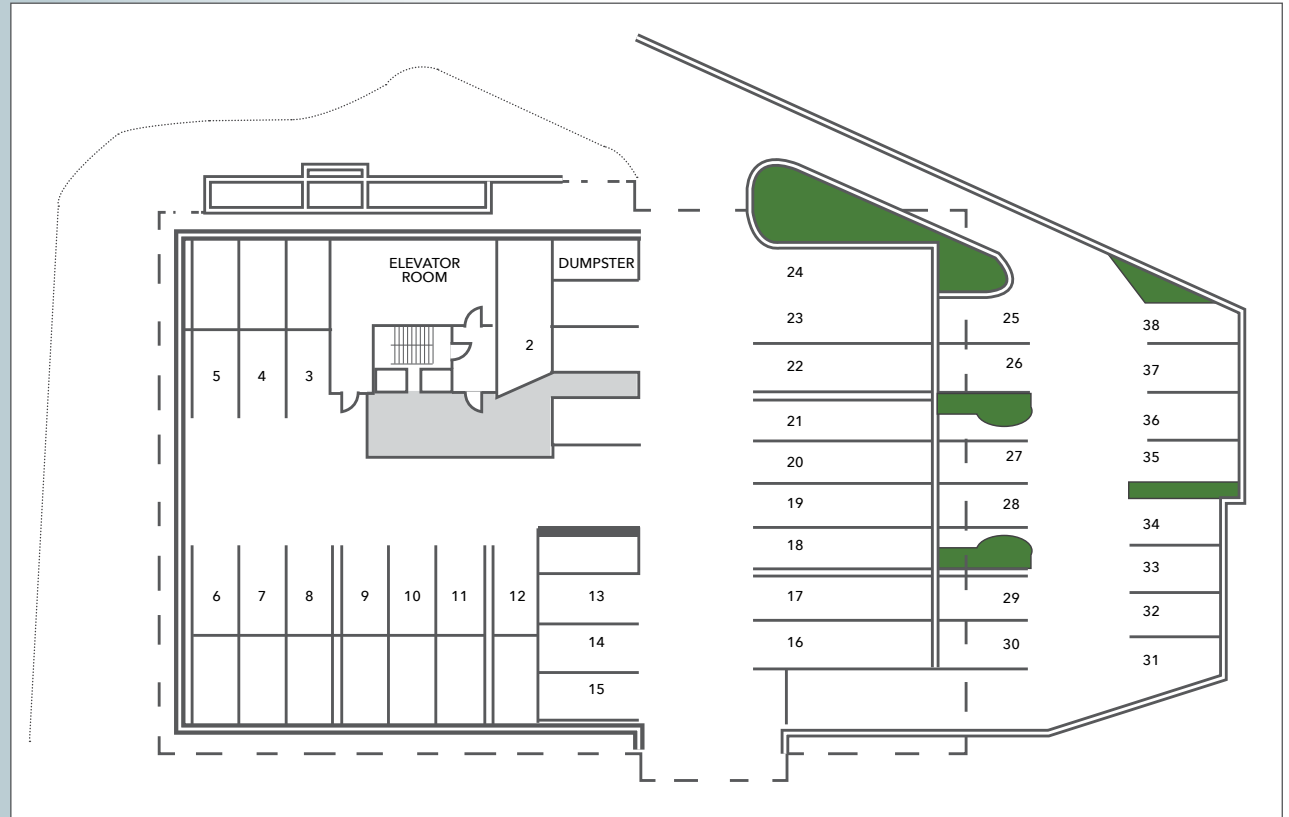
567



FASHION ISLAND



SITE PLAN



CARTER HARRINGTON
 SVP/Principal
 949.724.4710
 charrington@lee-associates.com
 DRE # 01762924

www.567sannicolasplace.com

SAN NICOLAS PLACE

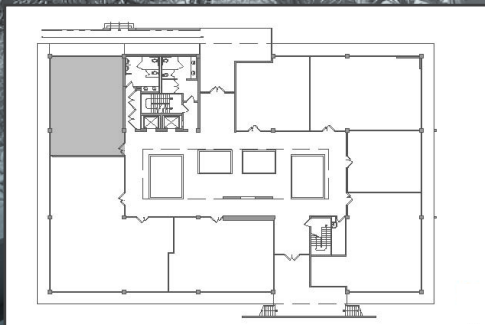
567



FASHION ISLAND

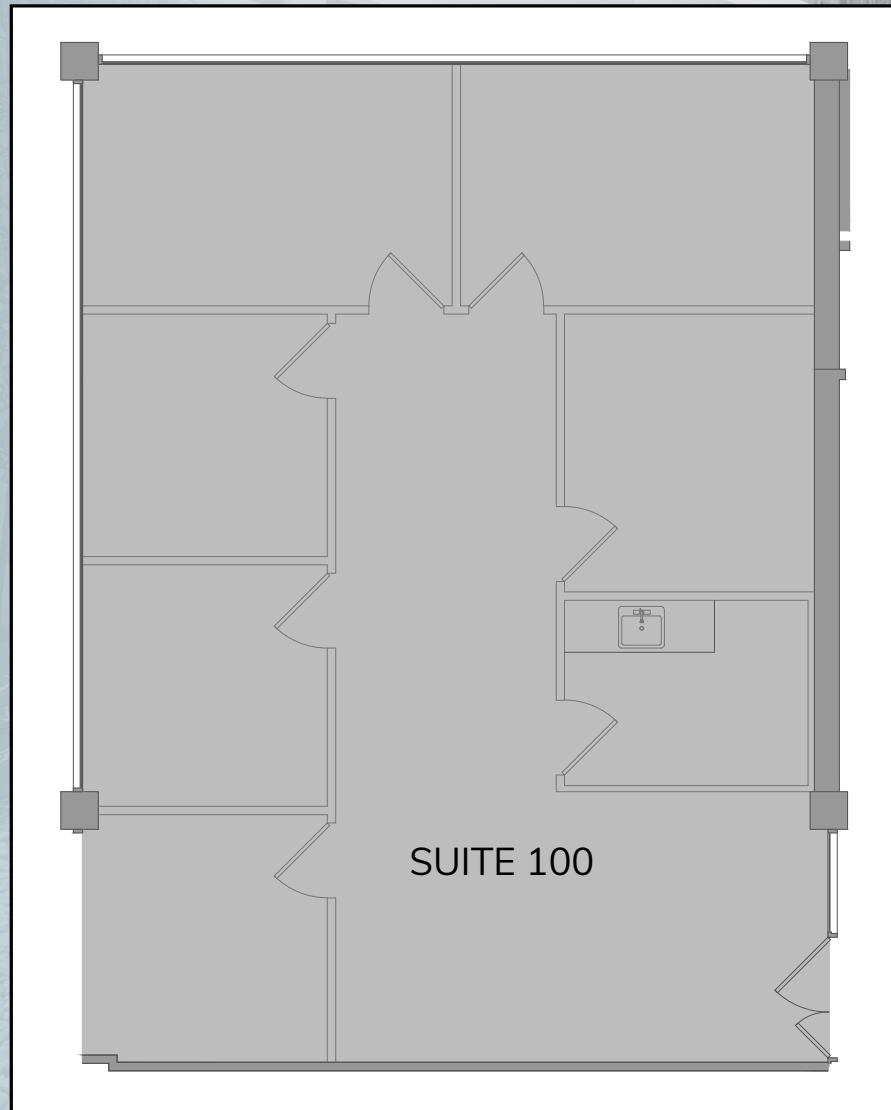
DESCRIPTION:

Suite 100:
Ground floor space, Plus-minus
Five (5) window offices, one (1)
interior, enclosed break room with
Sink, reception area.



CARTER HARRINGTON
SVP/Principal
949.724.4710
charrington@lee-associates.com
DRE # 01762924

SUITE 100
±1,478 SF



www.567sannicolasplace.com



SAN NICOLAS PLACE

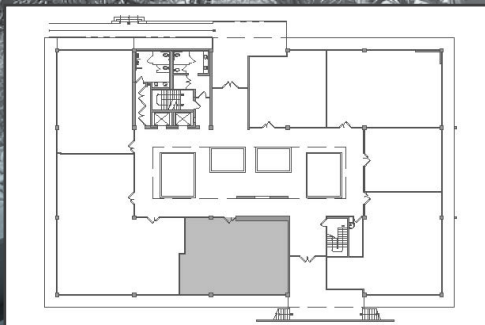
567



FASHION ISLAND

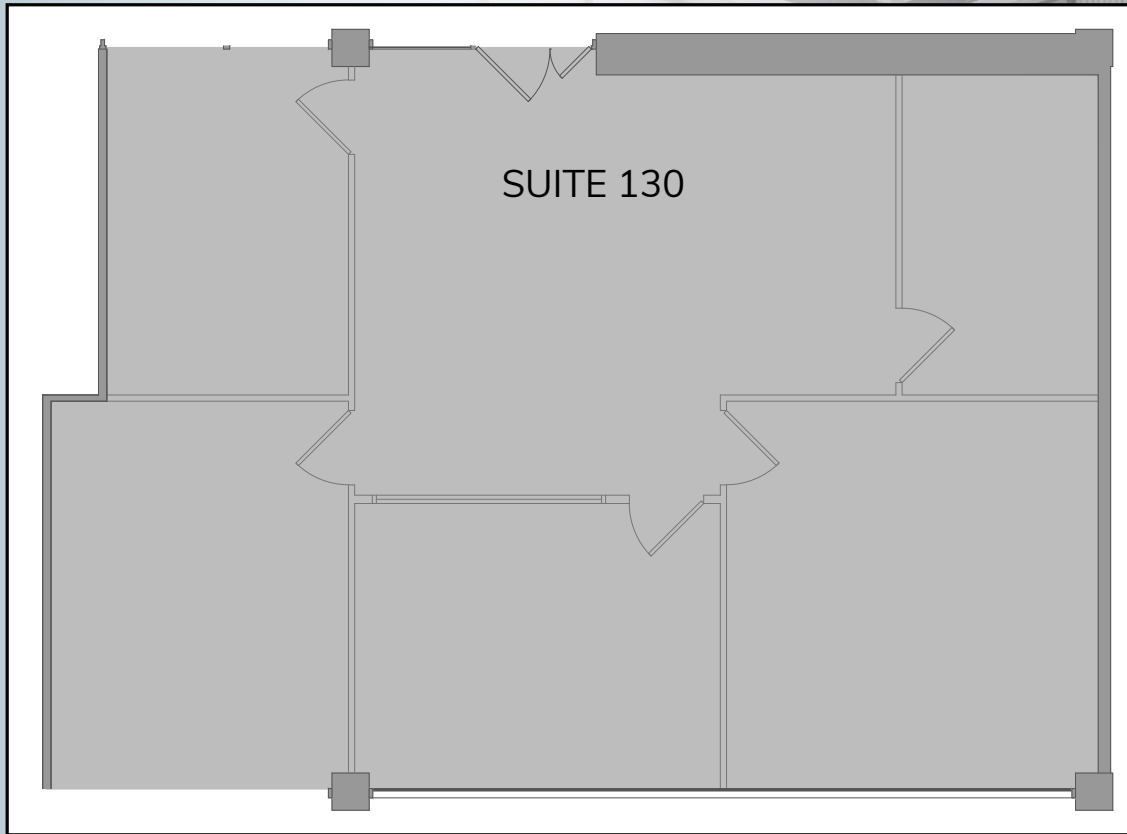
DESCRIPTION:

Suite 130: Four (4)
Offices, Storage Room.



CARTER HARRINGTON
SVP/Principal
949.724.4710
charrington@lee-associates.com
DRE # 01762924

SUITE 130
1,518 SF

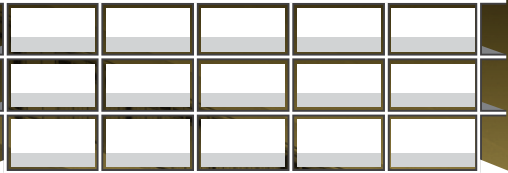


www.567sannicolasplace.com



SAN NICOLAS PLACE

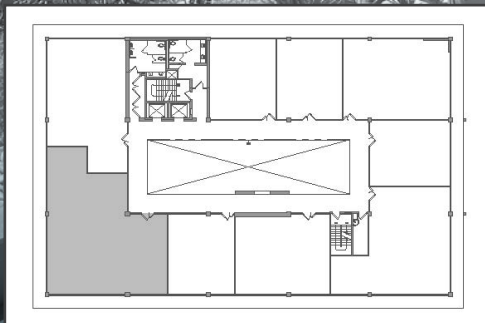
567



FASHION ISLAND

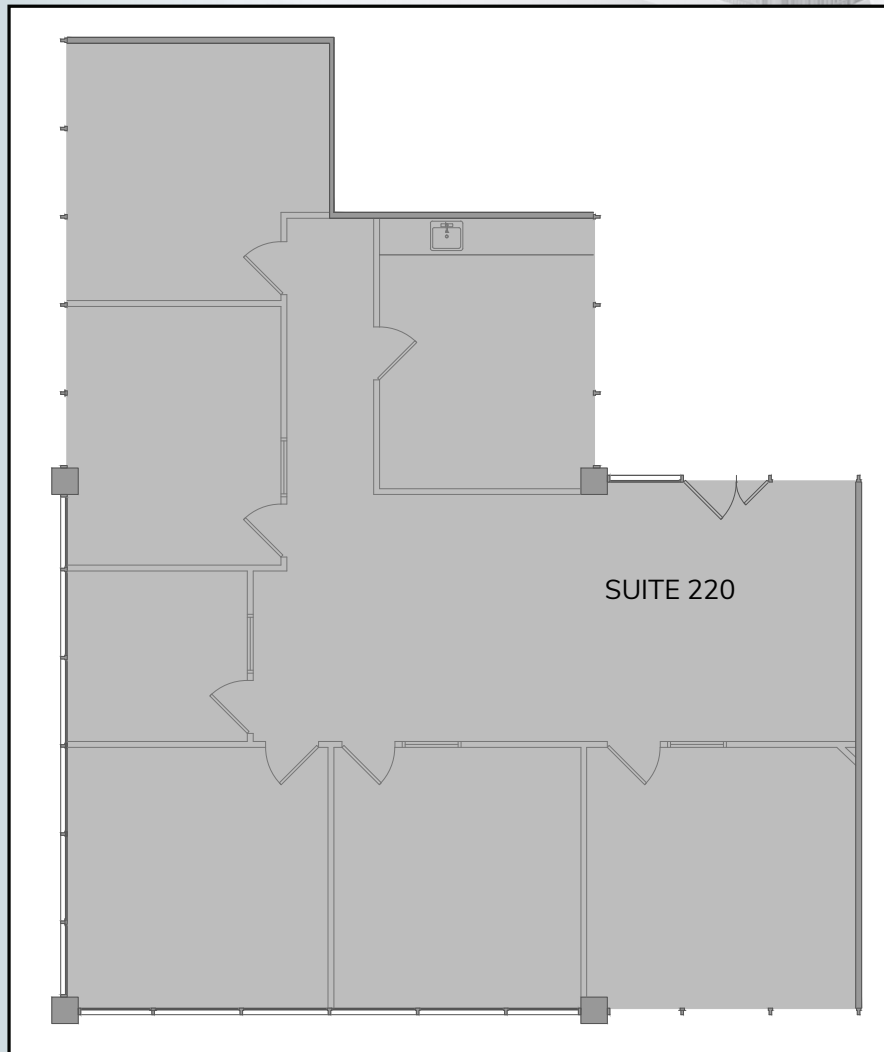
DESCRIPTION:

Suite 220: Six (6) Window Offices, Break Room w/ Sink & Dishwasher, Views.



CARTER HARRINGTON
SVP/Principal
949.724.4710
charrington@lee-associates.com
DRE # 01762924

SUITE 220
±2,428 SF



www.567sannicolasplace.com


LEE & ASSOCIATES
NEWPORT BEACH

SAN NICOLAS PLACE

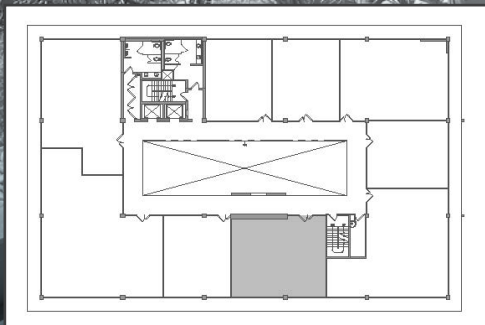
567



FASHION ISLAND

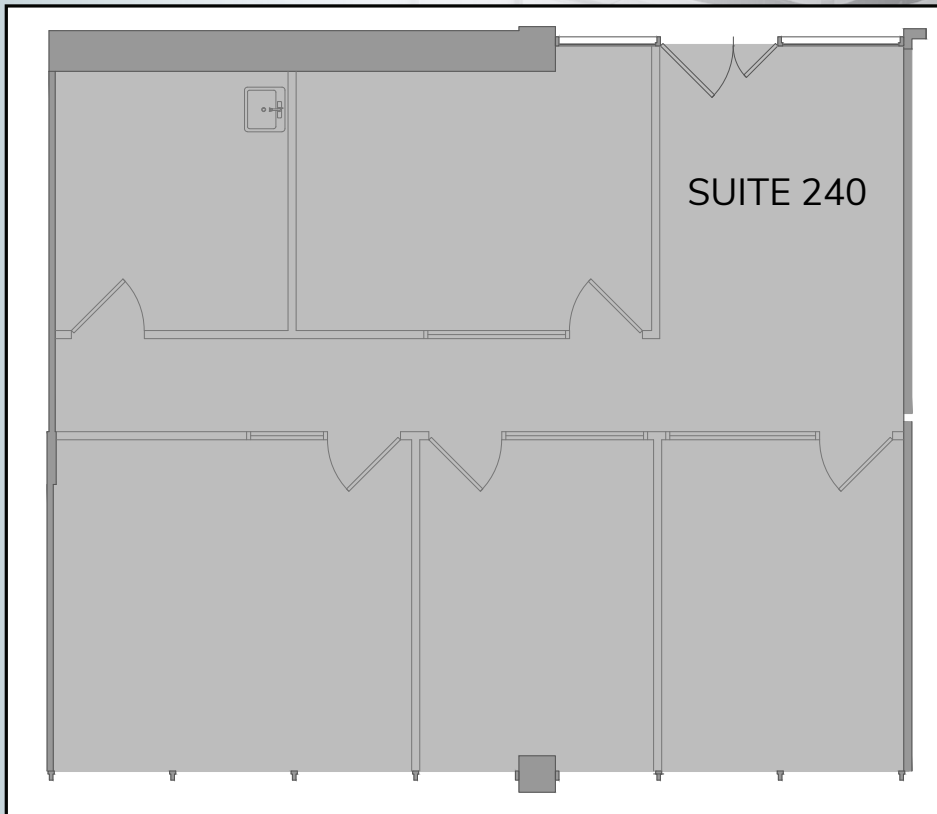
DESCRIPTION:

Suite 240: Ground floor space, 3 window offices, break room, conference room.



CARTER HARRINGTON
SVP/Principal
949.724.4710
charrington@lee-associates.com
DRE # 01762924

SUITE 240
± 1,286 SF



www.567sannicolasplace.com



SAN NICOLAS PLACE

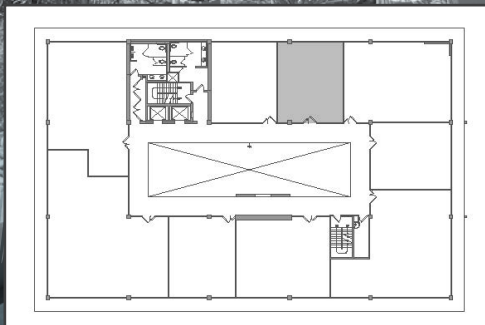
567



FASHION ISLAND

DESCRIPTION:

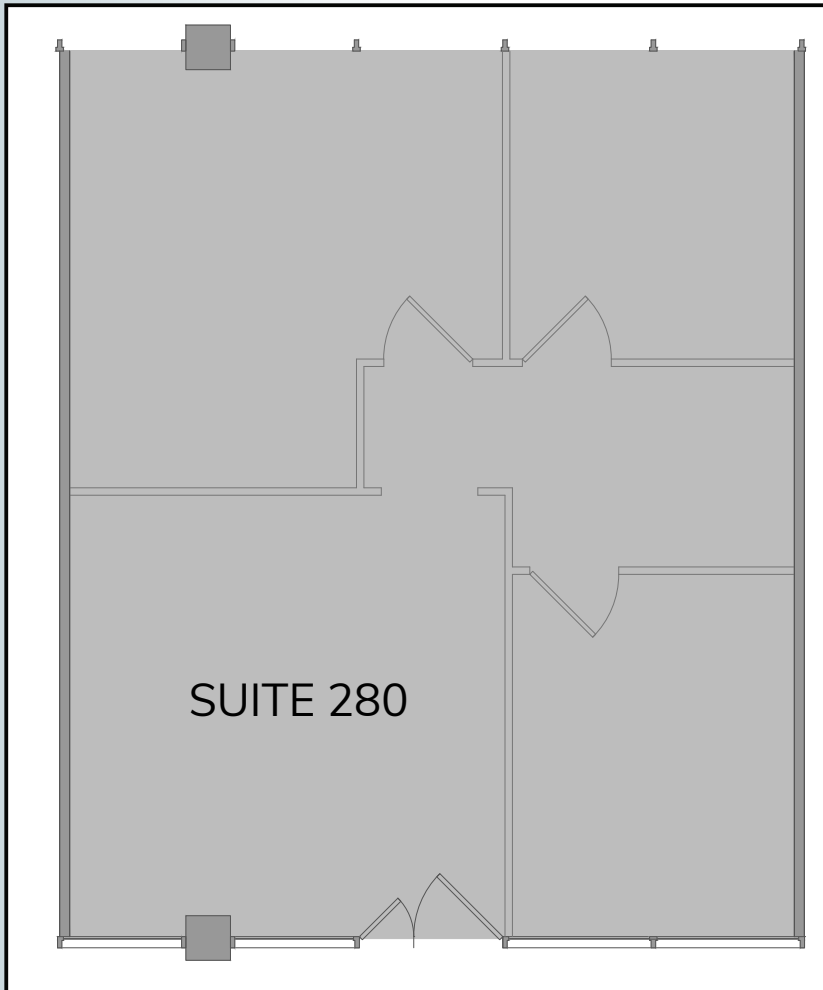
Suite 280: Three (3) Window Offices, Reception Area.



CARTER HARRINGTON

SVP/Principal
949.724.4710
charrington@lee-associates.com
DRE # 01762924

SUITE 280
±926 SF



www.567sannicolasplace.com

SAN NICOLAS PLACE

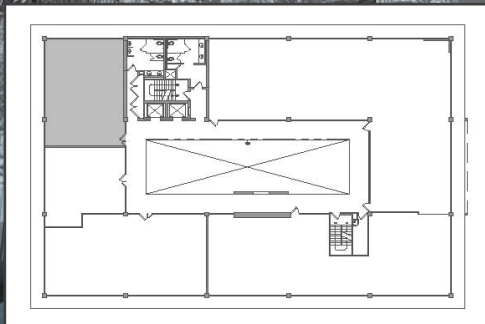
567



FASHION ISLAND

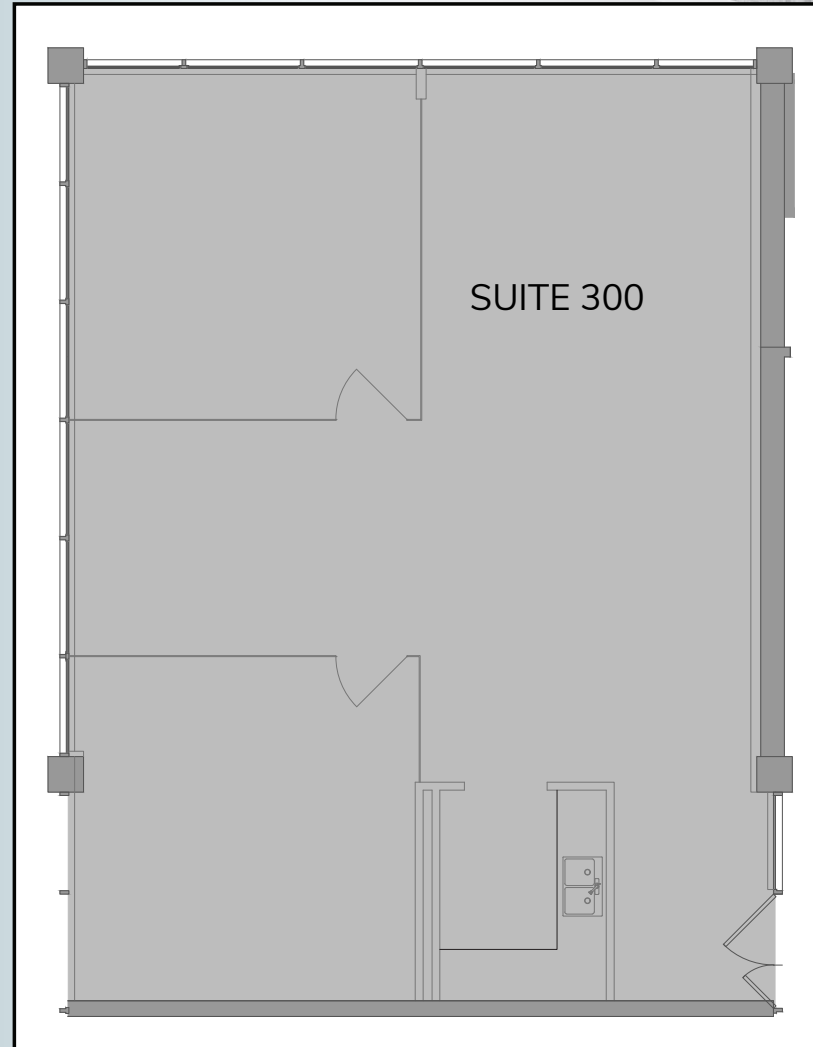
DESCRIPTION:

Suite 300: Corner Suite, Two (2) Glass Window Offices, Break Room w/ Sink.



CARTER HARRINGTON
 SVP/Principal
 949.724.4710
 charrington@lee-associates.com
 DRE # 01762924

SUITE 300
 ±1,466 SF



www.567sannicolasplace.com



SAN NICOLAS PLACE

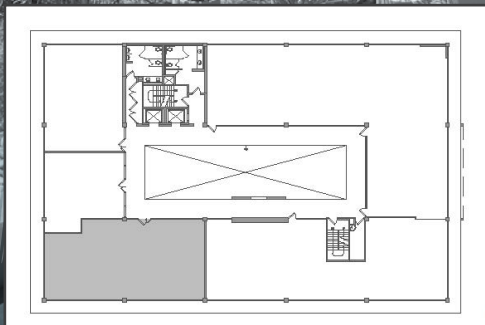
567



FASHION ISLAND

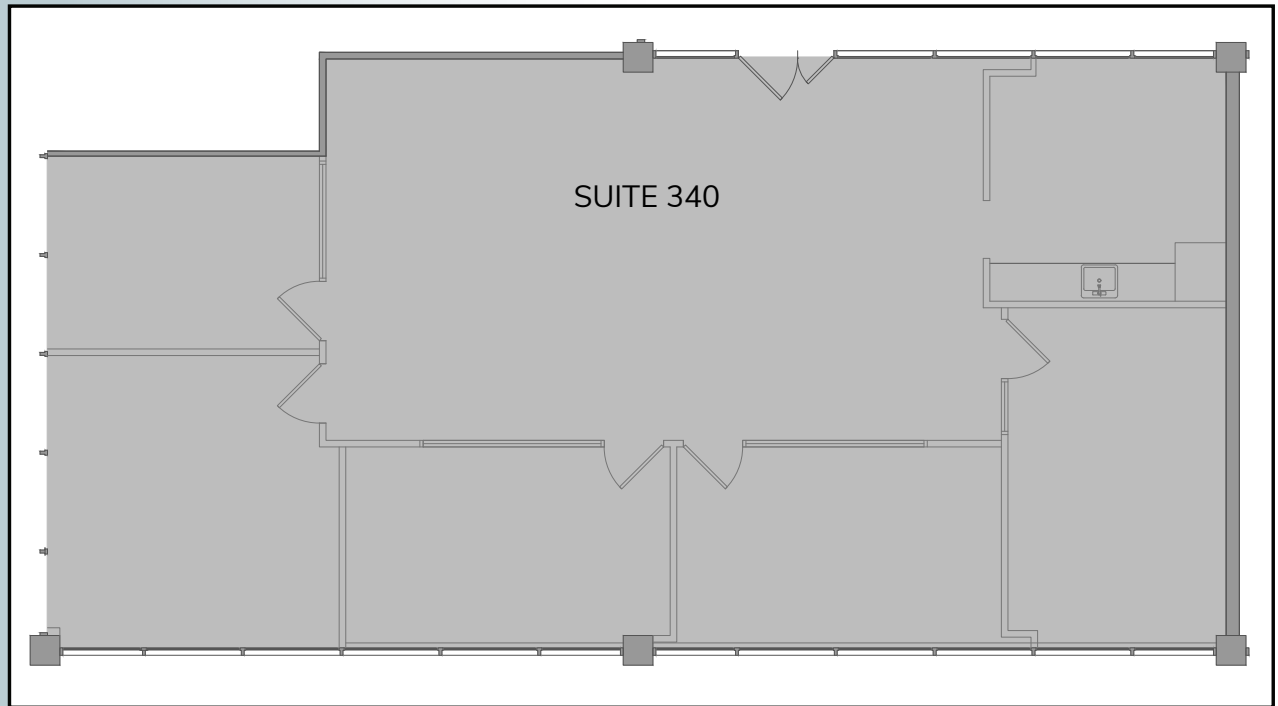
DESCRIPTION:

Suite 340:
Ocean View, ±4 window offices,
conference room, break room with
sink/dishwasher & with ocean view.



CARTER HARRINGTON
SVP/Principal
949.724.4710
charrington@lee-associates.com
DRE # 01762924

SUITE 340
±2,159 SF



www.567sannicolasplace.com

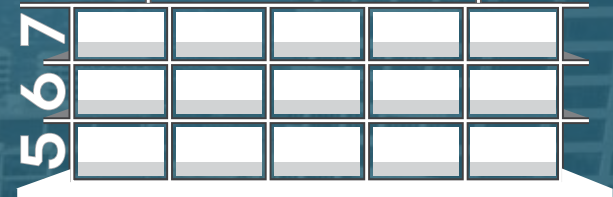


FASHION ISLAND
NEWPORT BEACH, CALIFORNIA



LEE & ASSOCIATES
NEWPORT BEACH

SAN NICOLAS PLACE



FASHION ISLAND

CARTER HARRINGTON

SVP/Principal

949.724.4710

charrington@lee-associates.com

DRE # 01762924

LEE & ASSOCIATES - NEWPORT BEACH

100 Bayview Circle, Suite 600

Newport Beach, CA 92660

lee-associates.com

949.724.1000

The information contained herein has been obtained from the property owner or other third party and is provided to you without verification as to accuracy. We (Lee & Associates, its brokers, employees, agents, principals, officers, directors and affiliates) make no warranty or representation regarding the information, property, or transaction. You and your attorneys, advisors and consultants should conduct your own investigation of the property and transaction.

www.567sannicolasplace.com